

**OFFICE OF THE MUNICIPAL CORPORATION, JAGDALPUR(C.G.)**

**PART A**

**DETAILED ESTIMATE**

**NAME OF WORK :--CONSTRUCTION OF DOME SHED PART-01 AT PT. SUNDARLAL SHARMA WARD-**

**32**

WORKS DEPARTMENT (PWD BUILDING ) (01-01-2015)

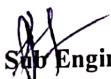
SN	ITEM DESCRIPTION	N	MEASUREMENT			QTY	UNIT	RATE	AMOUNT
			L	B	H/D				
1	Excavation for all types and sizes of foundations, trenches and drains or for any other purpose including disposal of excavated stuff upto 1.5 m lift and lead upto 50m (at least 5m away from the excavated area), including dressing and leveling of pits.								
		12	1.50	1.50	1.50	40.50			
		2	15.00	0.40	0.40	4.80			
		2	10.00	0.40	0.40	3.20			
						48.50	cum	185	8972.5
2	Providing and laying nominal mix plain cement concrete with crushed stone aggregate using concrete mixer in all works upto plinth level excluding cost of form work.								
	1:3:6 (1 cement : 3 coarse sand : 6 graded stone aggregate 40mm nominal size).	12	1.50	1.50	0.10	2.70			
		2	20.00	0.40	0.15	2.40			
		2	12.00	0.40	0.15	1.44			
		1	20.00	12.00	0.10	24.00			
						30.54	cum	2970	90703.8
3	Providing filling and compacting local earth (from approved source pit) in layers not exceeding 20cm in depth consolidating each deposited layer by ramming and watering, including dressing etc. complete.	1	20.00	12.00	0.25	60.00	cum	242	14520.00
4	Providing and filling in plinth with sand/ Crusher dust and hard moorum under floor in layers not exceeding 20cm in depth consolidating each deposited layer by ramming and watering, including dressing etc. complete.								
		1	20.00	12.00	0.15	36.00	cum	371.00	13356.00
5	Providing and fixing form work including centring, shuttering, strutting, staging, propping bracing etc. complete and including its removal at all levels, for:								

ITEM DESCRIPTION		N	MEASUREMENT			QTY	UNIT	RATE	AMOUNT
			L	B	H/D				
	Foundations, footings, bases of columns plinth beam, curtain wall in any shape and size and all type of wall below plinth level.	12	2.00	0.30	1.20	8.64			
		12	2.00	0.40	1.20	11.52			
		2	2.00	20.00	0.40	32.00			
		3	2.00	12.00	0.40	28.80			
						80.96	sqm	139.00	11253.44
6	Providing and laying nominal mix reinforced cement concrete with crushed stone aggregate using concrete mixer in all works upto plinth level excluding cost of form work.								
	1:1½:3 (1 cement : 1½ coarse sand : 3 graded stone aggregate 20mm nominal size).	12	1.50	1.50	0.50	13.50			
		12	0.30	0.40	1.20	1.73			
		2	20.00	0.30	0.40	4.80			
		3	12.00	0.30	0.30	3.24			
						23.27	cum	4163.00	96864.684
7	Providing and placing in position reinforcement for R.C.C. work including straightening, cutting, bending, binding etc. complete as per drawings including cost of binding wire in foundation and plinth all complete:								
	Thermo-Mechanically treated bars FE 415					2792.16	kg	54.50	152172.72
8	Brick work with modular fly-ash lime bricks (FaLG Bricks) confirming to IS:12894-2002 of class designation 4.0 in foundation and plinth in:								
	Cement Mortar 1:5 (1 cement : 5 coarse sand)	2	20.00	0.30	0.30	3.60			
		2	12.00	0.30	0.30	2.16			
						5.76	cum	3350.00	19296.00
9	Steel work in tubular (round, square or rectangular hollow tubes etc.) structure in built-up sections, trusses and frame work including cutting, hoisting, fixing in position upto a height of 5m above plinth level, consisting of columns trusses, roof and bottom purlins, base plate, holding down bolts, wind ties bracing (if required), bolts, nuts and washers for fastening etc. complete with applying a priming coat of red oxide zinc chromate primer.								




SN	ITEM DESCRIPTION	N	MEASUREMENT			QTY	UNIT	RATE	AMOUNT
			L	B	H/D				
	Electric resistance or induction butt welded tubes Grade-250								
	ISMB FOR COLOUMN	2	6	4.5	46	2484.00			
	base plate 16 mm	3	12	15.07		542.52			
	plate 10mm	2	20.00	23.55		942.00			
	nut bolt	72	2.5			180.00			
	ISMB FOR BOTTOM CHORD	2	20.00	37.3		1492.00			
	for bracing					1200			
						6840.52	kg	88.50	605386.02
10	Providing and laying vitrified floor tiles with double charge/ multi charge printing with water absorption less than 0.5% and conforming to IS : 15622 of approved make in all colours and shades and size mentioned below (+/- 10mm), laid on 20mm thick cement mortar 1:4 (1 cement : 4 coarse sand) including grouting the joints with white cement and matching pigments etc. complete.								
	Size 600x600mm	1	20.00	12.00		240.00	sqm	1151.00	276240.00
11	15 mm thick Table rubbed polished Granite stone slab flooring laid over 20mm (Average) thick base of cement mortar 1:4 (1 cement : 4 coarse sand) laid and jointed with grey cement slurry including rubbing and polishing etc. complete. (Area of slab should be 0.50 sqm and above)								
	Granite stone black	2	20.00	0.30		12.00			
		2	12.00	0.30		7.20			
						19.20	sqm	2646.00	50803.20
12	Providing and fixing 15 cm. wide 45cm. overall semi circular plain G.I. sheet gutter with iron brackets 40x3 mm size, bolts, nuts and washers etc. including making necessary connections with rain water pipe complete as per designs.								
	0.80 mm thick sheet	2	20.00			40.00	metre	424.00	16960.00

N	ITEM DESCRIPTION	N	MEASUREMENT			QTY	UNIT	RATE	AMOUNT
			L	B	H/D				
13	Providing and fixing Chlorinated Polyvinyl Chloride (CPVC) pipes, having thermal stability for hot & cold water supply including all CPVC plain & brass threaded fittings i/c fixing the pipe with clamps at 1.00 m spacing. This includes jointing of pipes & fittings with one step CPVC solvent cement and testing of joints complete as per direction of Engineer in Charge.								
	50 mm nominal outer dia .Pipes	12	5.00			60.00	metre	560.00	33600.00
14	Painting on new work (two or more coats) to give an even shade with:								
	Satin synthetic enamel paint					100.00	sqm	55.00	5500.00
15	Providing and making 15mm thick cement plaster on the rough side of single or half brick wall of mix:								
	In Cement Mortar 1:5 (1 cement : 5 fine sand)	2	20.00		0.30	12.00			
		2	12.00		0.30	7.20			
						19.20	sqm	113.00	2169.60
						TOTAL			1397797.964
						ELECTRIFICATION			37400.00
						TOTAL			1435197.964
						SAY RS. IN LACS			14.36

  
**Sub Engineer**  
**Municipal Corporation**  
**(.C.G)Jagdarpur**

**Asst. Engineer**  
**Municipal Corporation**  
**(.C.G)Jagdarpur**

  
**Executive Engineer**  
**Municipal Corporation**  
**(.C.G)Jagdarpur**




**OFFICE OF THE MUNICIPAL CORPORATION, JAGDALPUR (C.G.)**  
**DETAILED ESTIMATE**


**NAME OF WORK :-CONSTRUCTION OF DOME SHED PART-01 AT PT. SUNDARLAL SHARMA WARD-32**

NON SOR ITEM

SN	ITEM DESCRIPTION	N	MEASUREMENT			QTY	UNIT	RATE	AMOUNT
			L	B	H/D				
1	Supply and fixing & erection / excavation of full arch S/S self supporting roof system made of polymer precoated galvalume sheets(PPGS) of approved shape & thickness of the place where this PPGS is placed , total coated thickness(TCT ) 1.10 mm+/- 5% , epoxy primer on both sides of the sheet and colour polyester top coat 18-20 microns and 6-7 microns on bottom, coil width 912mm, tolerance+/- 4mm ALZ 150gms, 350: tensile strength . Sheet should have protective guard film of 25 microns minimum to avoid scratches while transportation & should be supplied in rolled form which will be then hydraulically pressed to give desired pitch , corrugation & shape and moulded on site to give desired length as per drawings and design given by EIC. The sheet shall be fixed using self drilling/ self tapping screws of size(5.5*55mm) with EPDM seal or with polymer coated J or L hooks , bolts and nuts of minimum 8mm dia, with bitumen and G.I limpet washers filled with white lead complete upto any pitch in horizontal / vertical or curved surfaces including cutting hoisting fixing in position upto height of 7m above plinth level, screw , welding, nuts & bolting including cutting to size and shape								
		1	20.00	14.00		280.00	sqm	3800.00	1064000.00
						<b>TOTAL (Say In Lacs)</b>			<b>10.64</b>

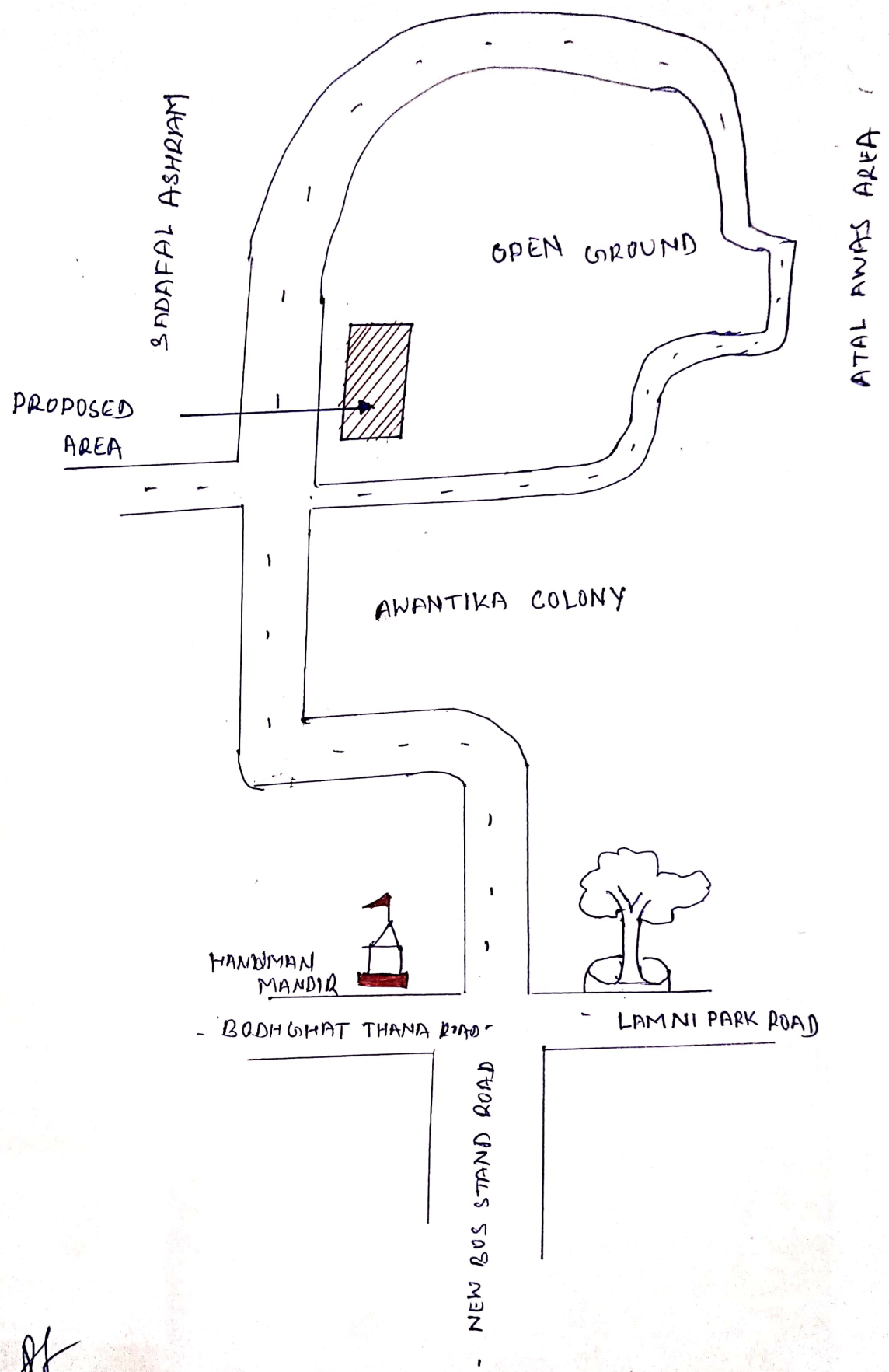
  
**Sub Engineer**  
**Municipal Corporation**  
**(.C.G)Jagdalpur**

**Asst. Engineer**  
**Municipal Corporation**  
**(.C.G)Jagdalpur**

  
**Executive Engineer**  
**Municipal Corporation**  
**(.C.G)Jagdalpur**

SITE PLAN

CONSTRUCTION OF DOME SHED PART-01 AT PT. SUNDARLAL SHARMA WARD-32



88





GPS Map Camera



EECOLONY

Maps

**Jagdalpur, Chhattisgarh, India**

Basmunda Road, Avantika Colony, Jagdalpur, Chhattisgarh  
494001, India

Lat 19.065623, Long 82.024066

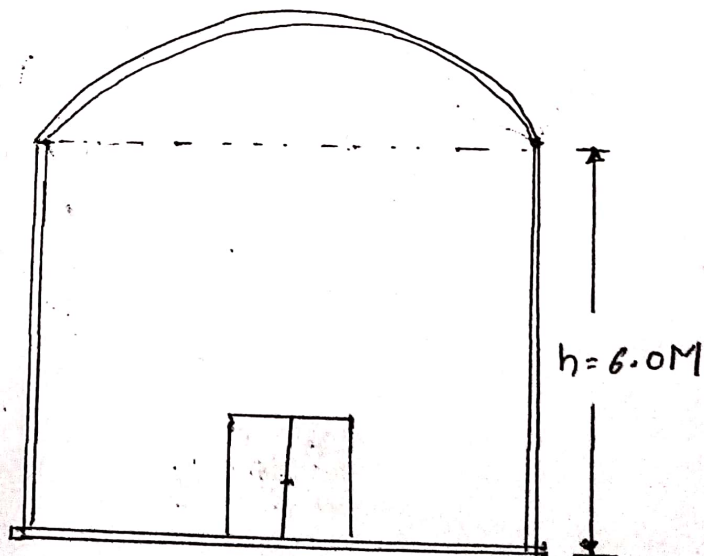
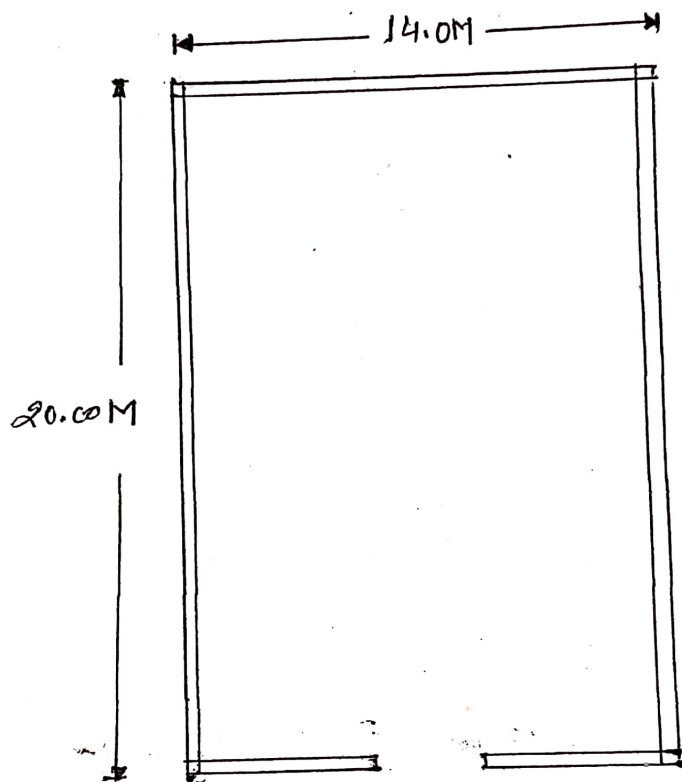
22/03/26 12:39 PM GMT+05:30



Scanned with OKEN Scanner



DOME SHED PART-01, PT. SUNDARLAL SHARMA  
WARD-32



24/03/25